

enovate

M E D I C A L

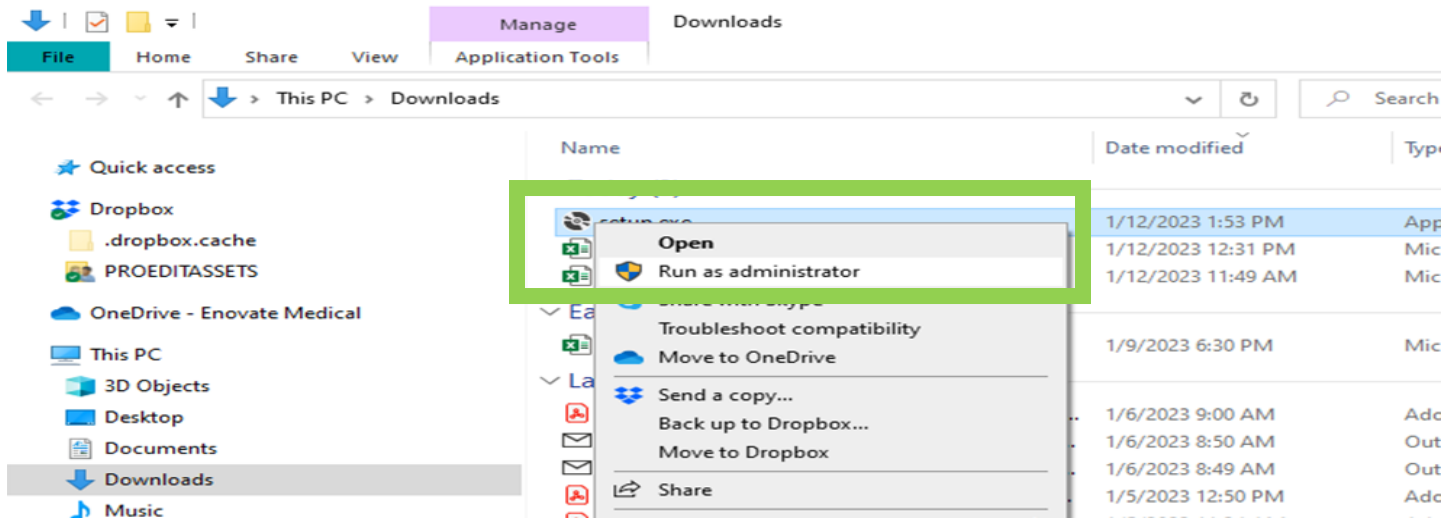
MobiusPower Scout User's Guide



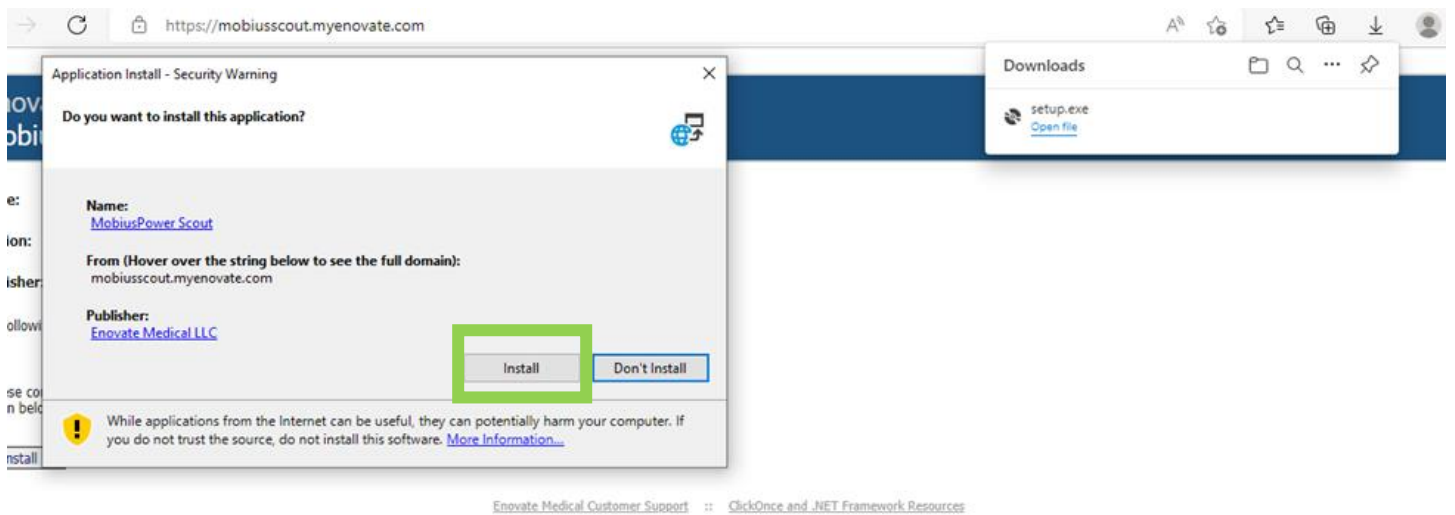
3/12/2020

Download

- MobiusPower Scout can be downloaded from link below
<http://mobiuscout.myenovate.com/>
- From the Downloads Folder, right-click on setup.exe and Run as administrator.



- When the Application Install box appears, click Install.



- Once it has installed and you have logged in, it will take you to the Homepage.

MobiusPower Scout Disconnected

Charger ☒ Battery Reader

Health: 0%

Charge Level: 0%

Serial: FCC: 0 Remaining Cycles: 0

Health: 0%

Charge Level: 0%

Serial: FCC: 0 Remaining Cycles: 0

Health: 0%

Charge Level: 0%

Serial: FCC: 0 Remaining Cycles: 0

Health: 0%

Charge Level: 0%

Serial: FCC: 0 Remaining Cycles: 0

Click To Read Batteries

🔋 Good
🔋 Replace Soon
🔋 Remove from service

● A yellow LED on the charger indicates a battery error. Please disregard all readings from that battery, remove it from service and contact technical support.

- From there select the Battery Reader. It will then walk through the prerequisites that will need to be installed.
- Install Python, select Yes.

MobiusPower Scout

Charger ☐ Battery Reader ☒

Health: 0%

FCC: 0

Serial: Remaining Cycles: 0

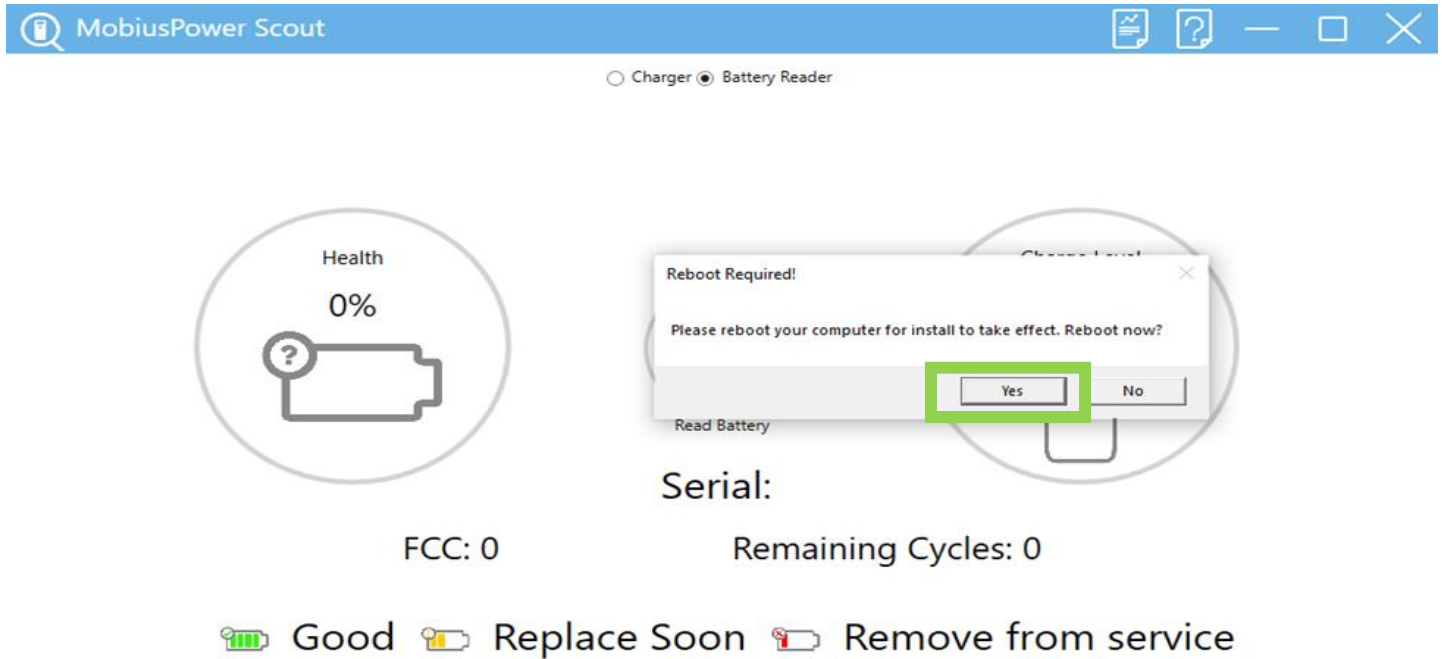
Install Python

Python is not installed. To use Mobius Cable you must install Python. Do you want to install now?

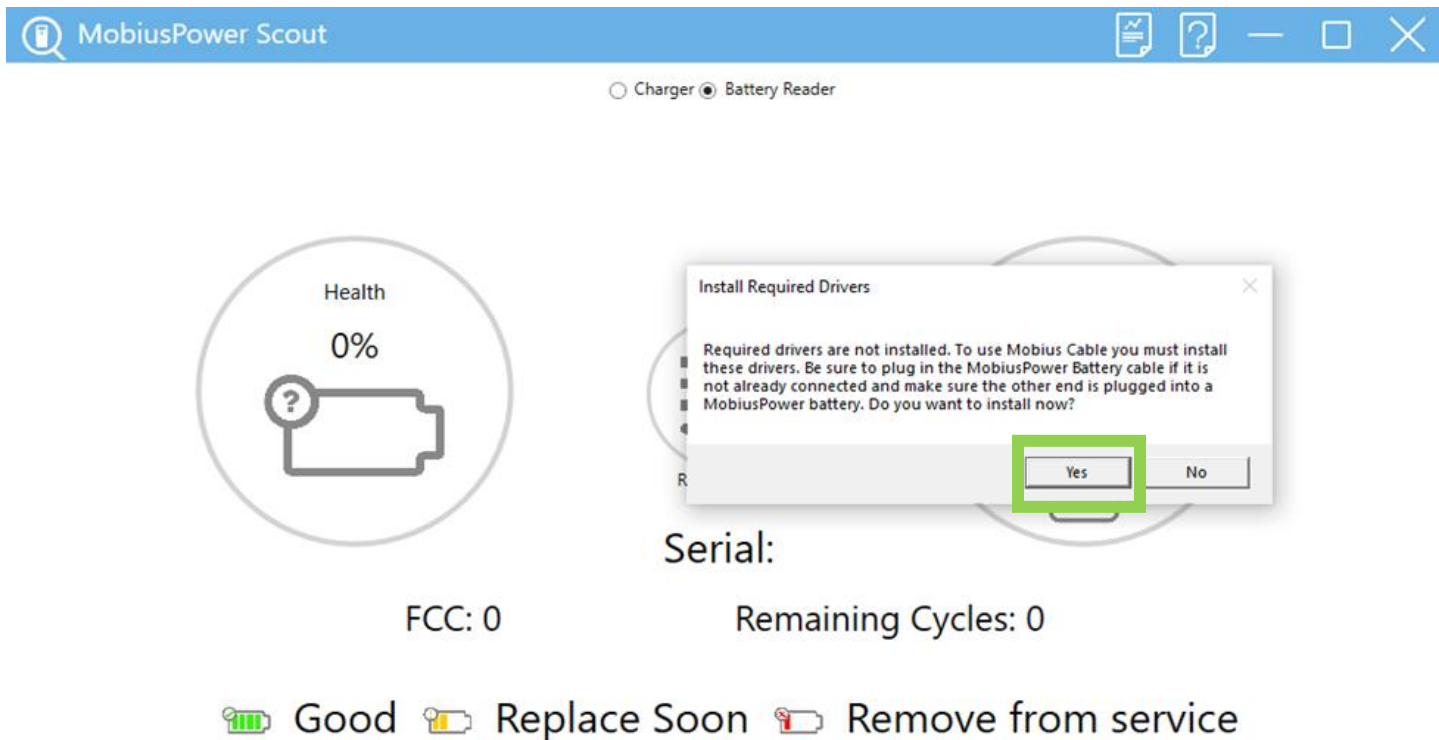
Read Battery

🔋 Good
🔋 Replace Soon
🔋 Remove from service

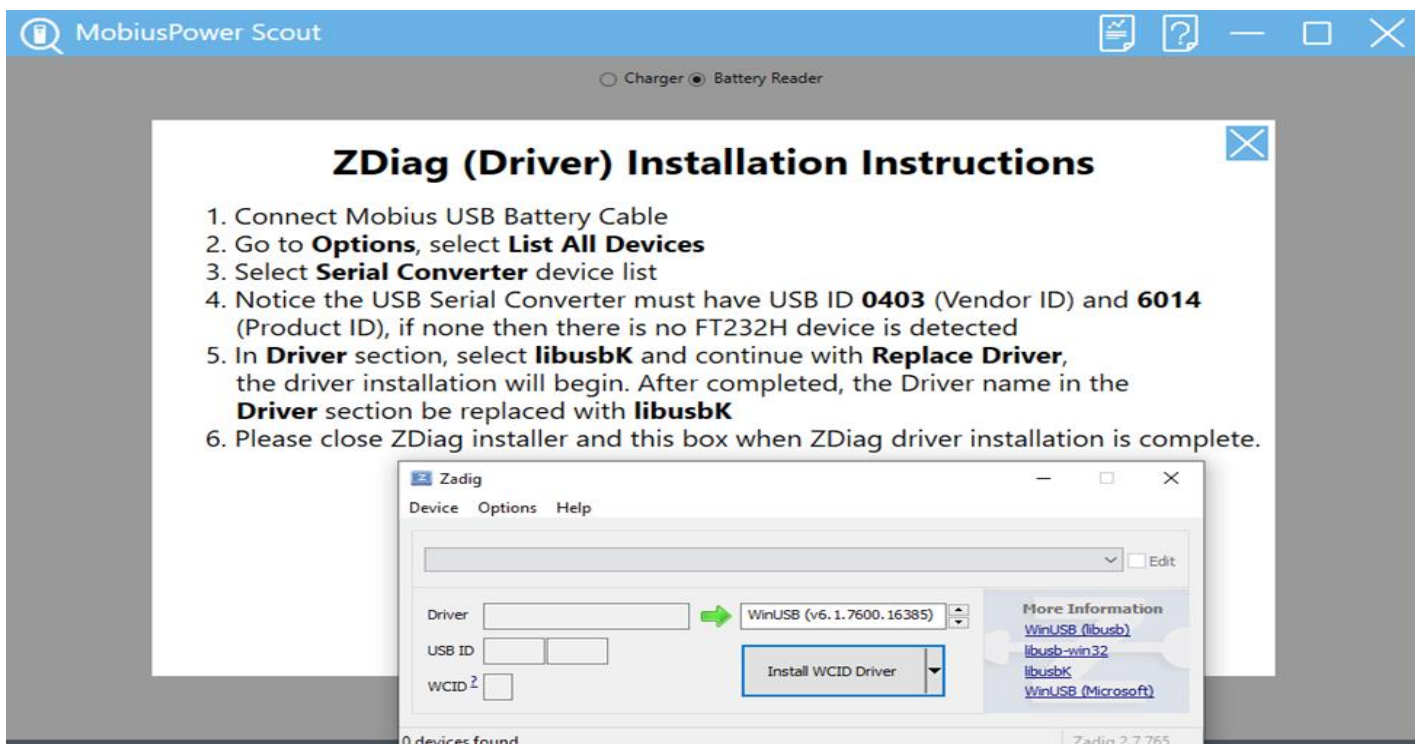
- After Python has been installed, it will then prompt you to reboot your computer. This is important, select Yes.



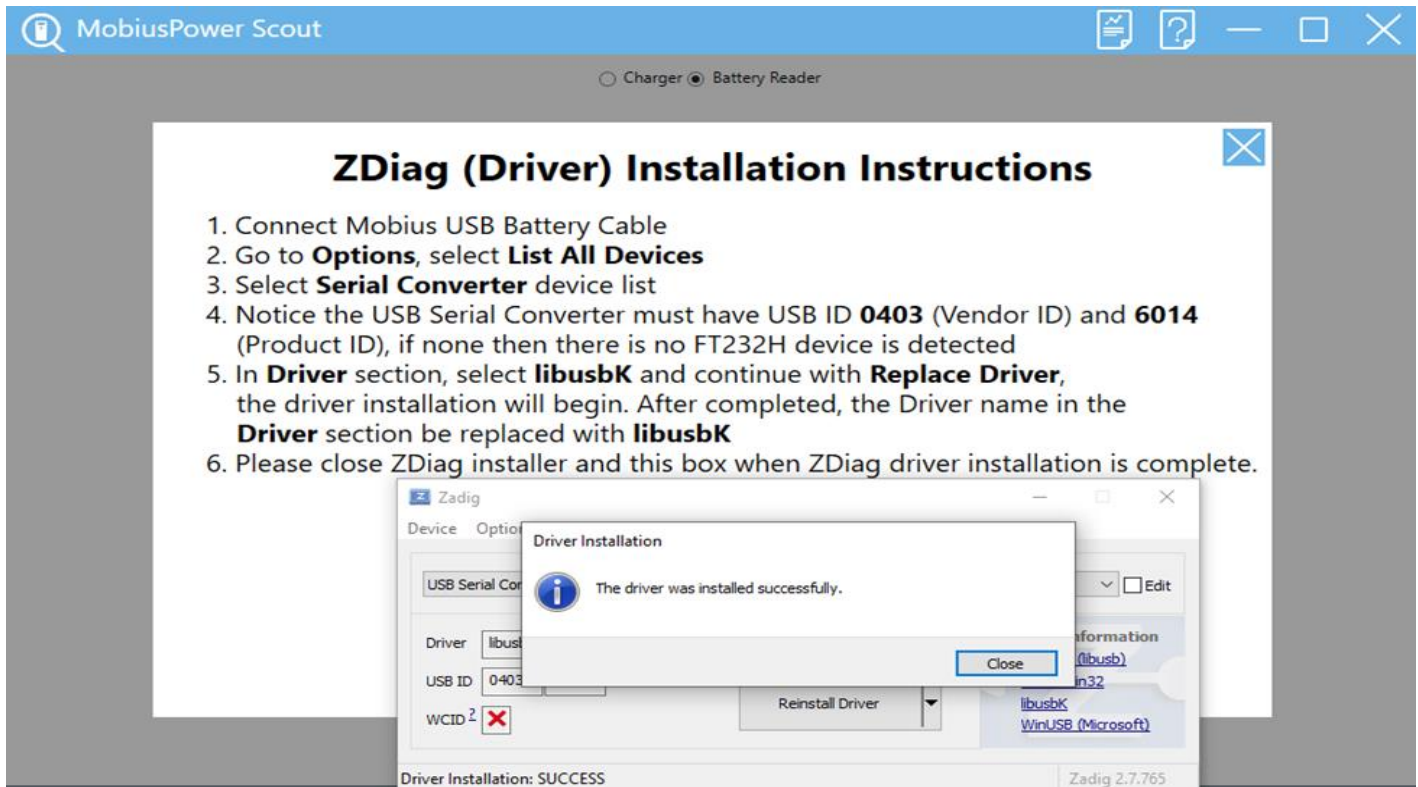
- Once the reboot is complete, Log back into MobiusPower Scout application.
- Select Battery Reader, a prompt box will display to install required drivers. Plug the Battery Reader into the computer and attach a MobiusPower Battery.
- Select Yes to continue.



- It will then prompt to install Zadig, select Yes. Make sure to have the Battery Reader plugged in with a MobiusPower Battery.
- Driver Installation Instructions will display; follow the steps.

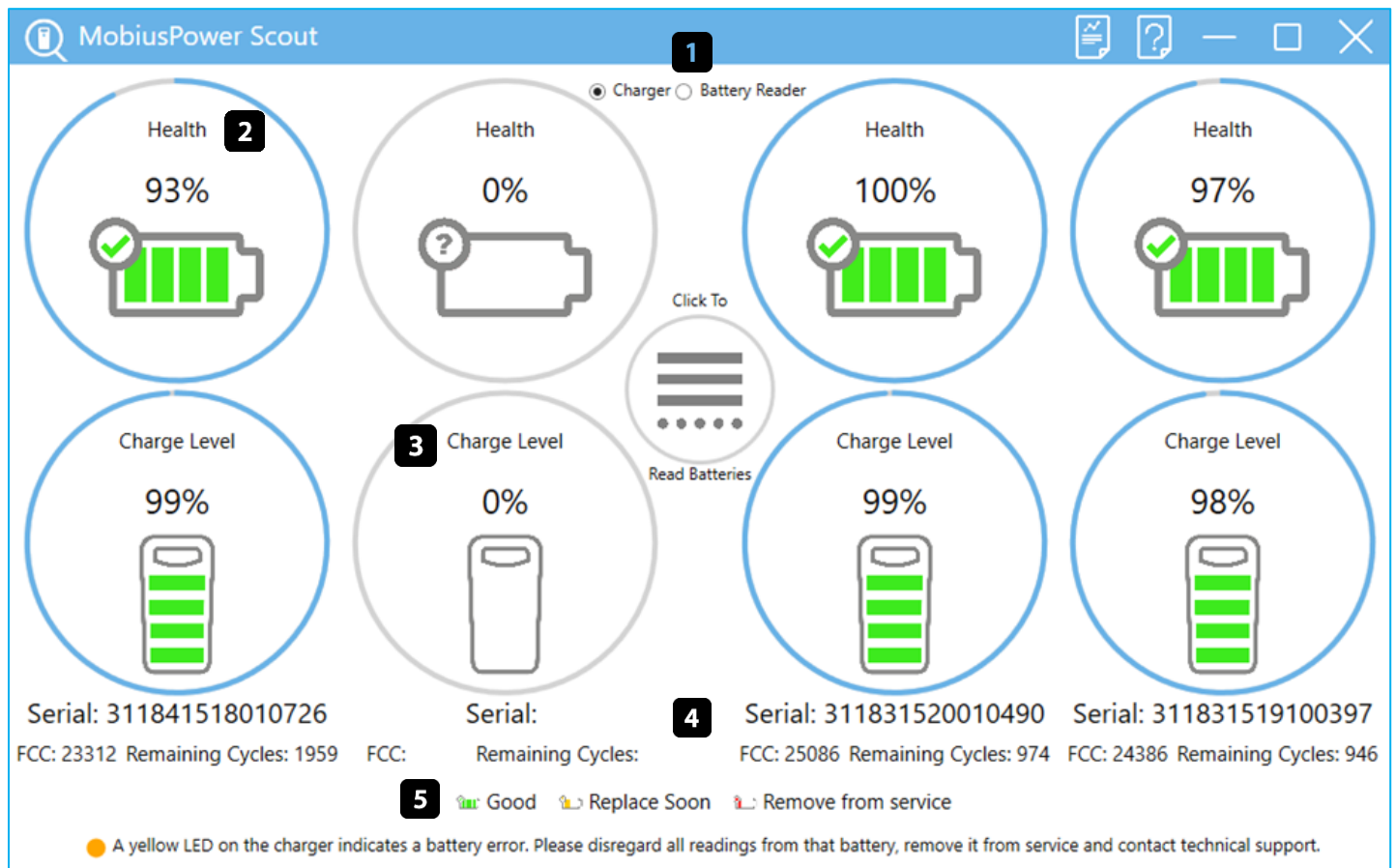


- Once it has installed, a prompt box will display stating it has installed successfully.



- Close the prompt box and the instruction box.
- You are now ready to use the Battery Reader to read the MobiusPower Batteries.

Home screen



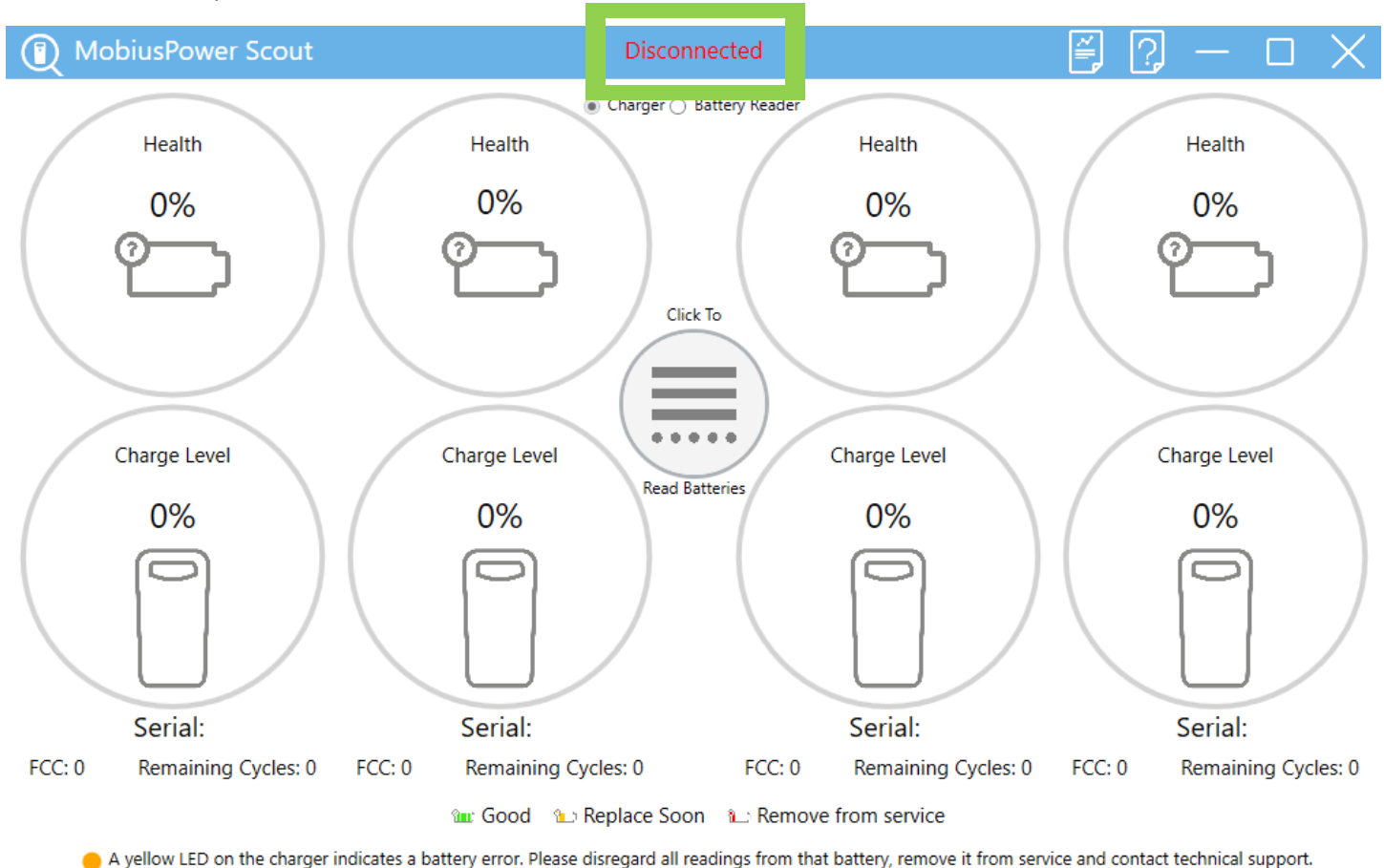
1. Read Mode Selector
2. Battery Health
3. Battery Charge Level
4. Battery Serial Number, FCC, Remaining Cycles
5. Legend
 - a. 71% and up health and/or over 270 cycles remaining: Green (Good)
 - b. 70% - 61% Health and/or 91 – 269 cycles remaining: Yellow Warning (Replace Soon)
 - c. 60% and below Health and/or 0 – 91 cycles remaining: Red Critical (Remove from Service)

Reading Batteries

1. Open MobiusPower Scout and login



2. Power on the charger and connect the charger to an open USB port on the PC.
 - a. Scout will automatically detect a two bay or four bay charger. The Home Screen will update to reflect the number of bays automatically. If Scout does not detect a charger, "Disconnected" will appear at the top of the screen



3. Insert the battery or batteries into the charger. Wait for the serial numbers to display on the screen.
 - a. If you are in ALL Mode, select "Click To Read Batteries" to read all bays simultaneously
 - b. If you are in Individual Mode, select the bay number associated with the battery you wish to read.

Charger Mode

MobiusPower Scout Disconnected

☒ Charger ☐ Battery Reader

Health
0%

Health
0%

Health
0%

Health
0%

Charge Level
0%

Charge Level
0%

Charge Level
0%

Charge Level
0%

Serial:
FCC: 0
Remaining Cycles: 0

Serial:
FCC: 0
Remaining Cycles: 0

Serial:
FCC: 0
Remaining Cycles: 0

Serial:
FCC: 0
Remaining Cycles: 0

Good Replace Soon Remove from service

● A yellow LED on the charger indicates a battery error. Please disregard all readings from that battery, remove it from service and contact technical support.

Click To

Read Batteries

Battery Reader Mode

MobiusPower Scout

☐ Charger ☒ Battery Reader

Health
0%

Charge Level
0%

Serial:
FCC: 0
Remaining Cycles: 0

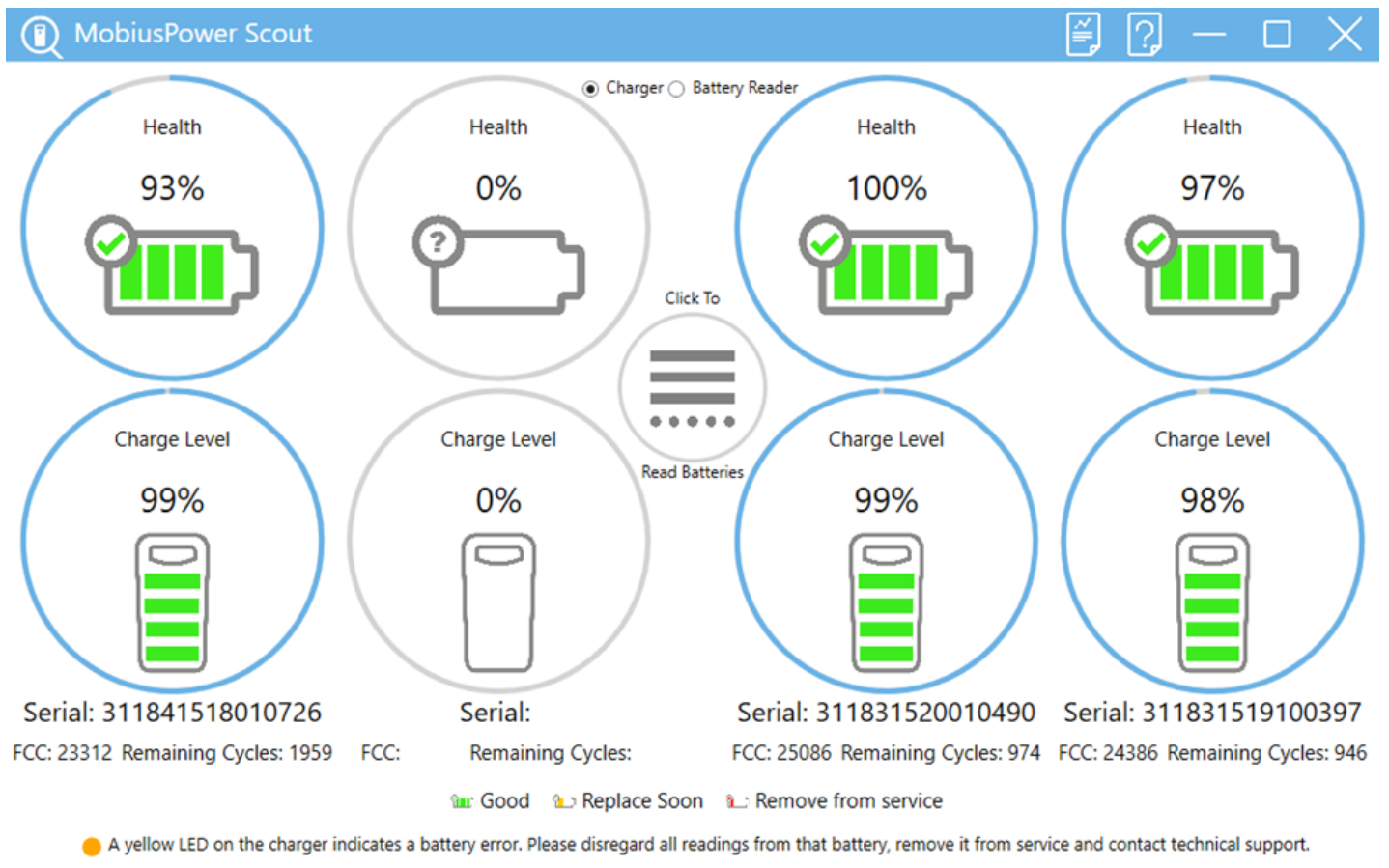
Serial:
FCC: 0
Remaining Cycles: 0

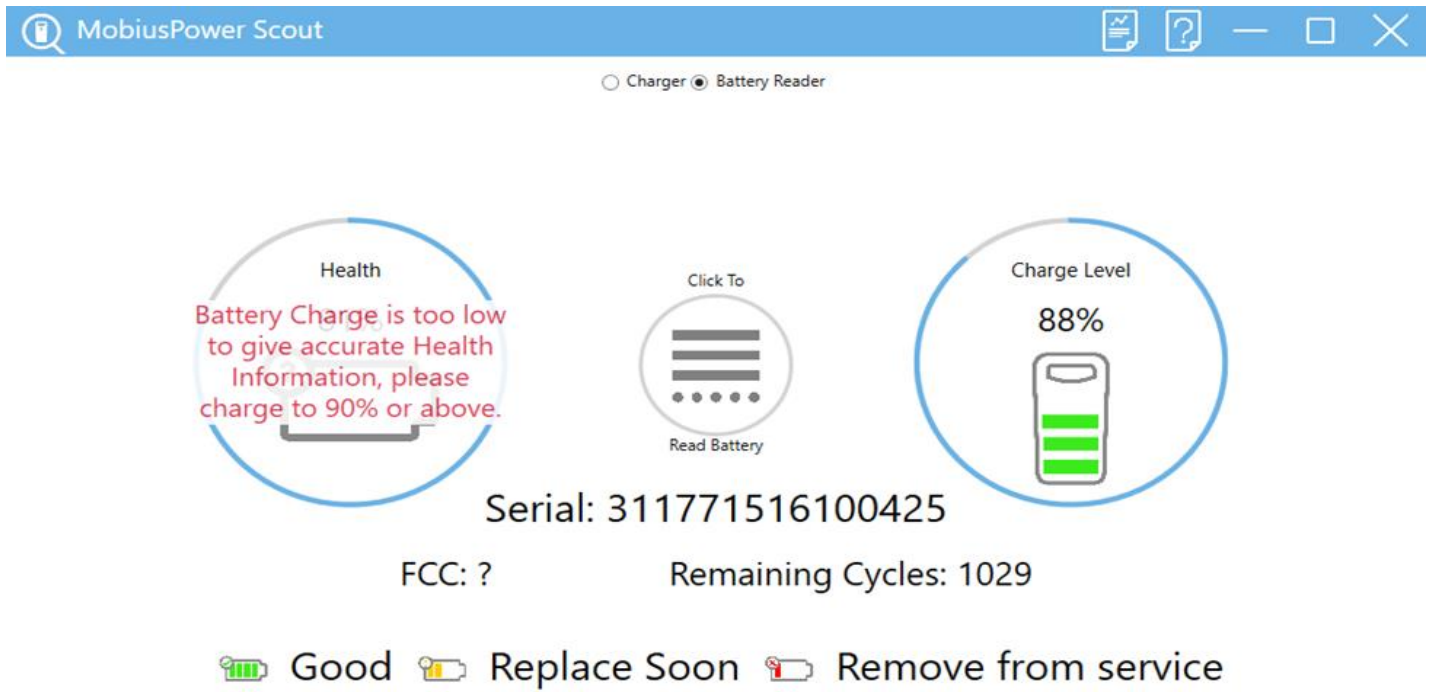
Good Replace Soon Remove from service

Click To

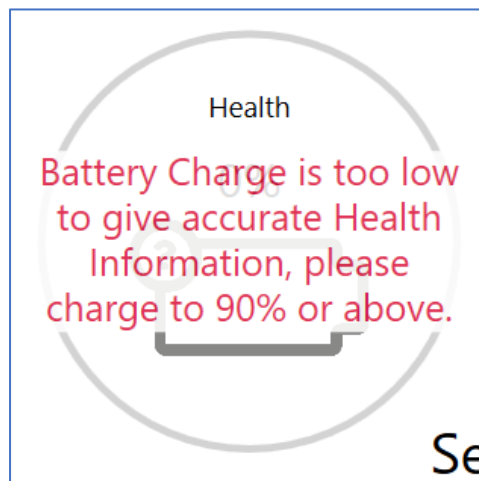
Read Battery

4. A successful read will return the battery's health, charge level, FCC, and Remaining Cycles.

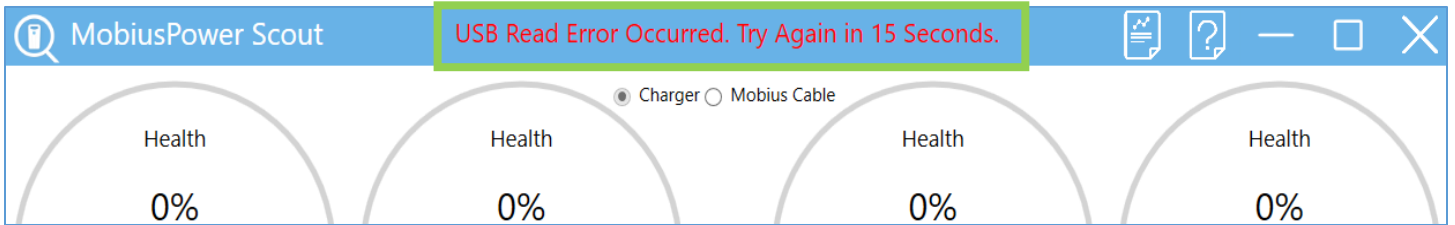




- a. In order to ensure an accurate health reading, the battery must be charged 90% or above. If the battery is below 90%, Scout will display the following message:

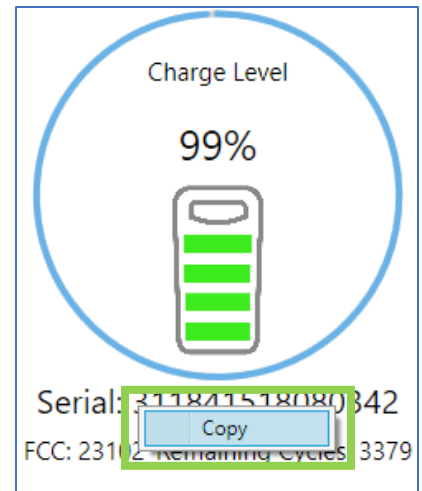


- b. If Scout encounters a USB Read Error during a reading, Scout will indicate an error has occurred and instruct the user to retry after 15 seconds.



5. When switching batteries after a successful read
 - a. Remove the battery (or batteries) from the bay charger.
 - b. Wait until the serial number(s) are cleared from the screen (could take up to 30 seconds)
 - c. Insert the next set of batteries into the charger.
 - d. Wait until the serial numbers of the batteries are displayed.
 - e. Read batteries as described in step 3.

- To copy an individual serial number, right click on the serial number and select “copy”.



- To export the reading to a log file, click on the export button after a successful reading.



MobiusPower Scout – Battery Reader Requirements

For reading MobiusPower batteries directly.

Prerequisites

Required drivers will be added on first use of the Batttery Reader using MobiusPower Scout and are not part of the list below.

- Windows 10
- Windows 11

**Windows 7 and below are not supported

**Mac devices are not supported