

Contract Number: 710299

Certificate: SGSNA/18/SUW/00121
Certificate Project Number: SUW-CERT180500145

Certified Product: Medical Cart
Trademarks (if any): Envoy
Model(s): ENV0-1DC000-000, ENV0-1DC000-050,
ENV0-1DC000-A00, ENV0-1DC000-A50,
ENV0-1DCAC0-000, ENV0-1DCAC0-050,
ENV0-1DCAC0-A00, ENV0-1DCAC0-A50,
ENV0-2DC000-000, ENV0-2DC000-050,
ENV0-2DC000-A00, ENV0-2DC000-A50
Technical Data: 100-240Vac; 4.2A; 50/60Hz



Name and Address of Certificate Holder: Enovate Medical, LLC
1152 Park Avenue, 37129, Murfreesboro, Tennessee,
United States of America

Name and Address of Manufacturer: Enovate Medical, LLC
1152 Park Avenue, 37129, Murfreesboro, Tennessee,
United States of America

This certificate supercedes previous certificates issued with the same certificate number. Certification is valid when products are indicated on the SGS directory of certified products at www.sgs.com. The product is certified according to ISO/IEC Guide 17067, *Conformity assessment - Fundamentals of product certification, System 3*, and in accordance with

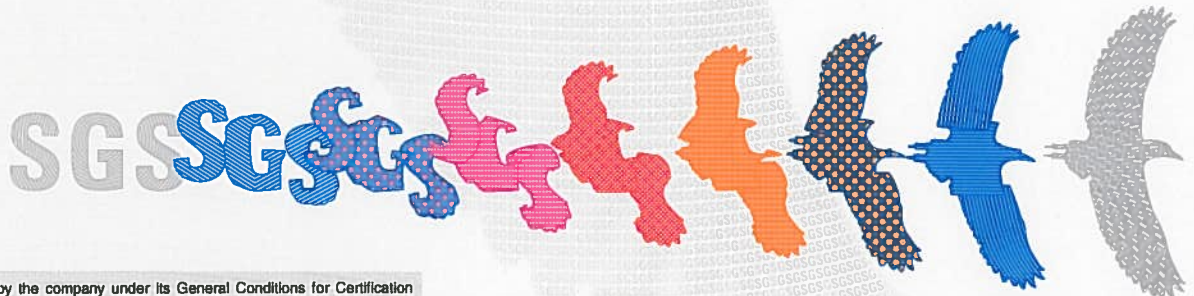
ANSI/AAMI ES60601-1:2005 +C1 (2009) +A1 (2012) +A2 (2010)
CAN/CSA C22.2 No. 60601-1:14

Authorized by

Effective date: 07 June 2018


Paul Krauss
Certifier

Consumer and Retail Services, a division of SGS North America Inc.
620 Old Peachtree Road, Ste. 100, Suwanee, GA 30024, USA
t +1 770 570 1800 f +1 770 277 1240 www.sgs.com
Page 1 of 2



This certificate is issued by the company under its General Conditions for Certification Services accessible at www.sgs.com/terms_and_conditions.htm. Attention is drawn to the limitations of liability defined therein and in the Test Report here above mentioned which findings are reflected in this Certificate. Any unauthorized alteration, forgery or falsification of the content or appearance of this document is unlawful and offenders may be prosecuted to the fullest extent of the law.

Contract Number: 710299

Certificate: SGSNA/18/SUW/00121
Certificate Project Number: SUW-CERT180500145

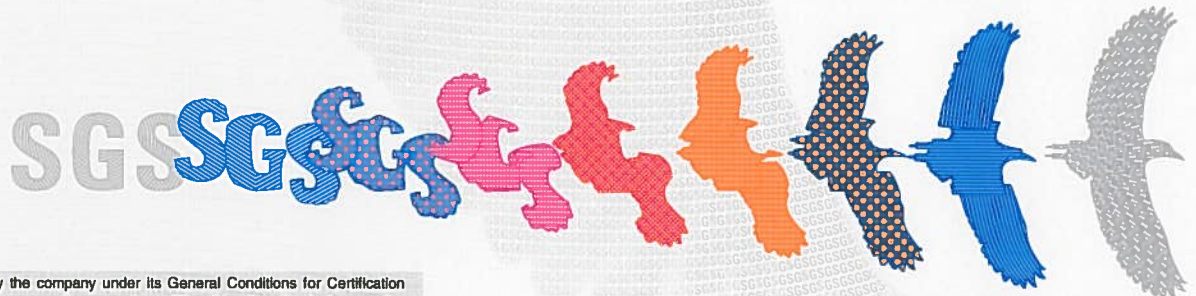
Certified Product: Medical Cart
Trademarks (if any): Envoy
Model(s): ENV0-1DC000-000, ENV0-1DC000-050,
ENV0-1DC000-A00, ENV0-1DC000-A50,
ENV0-1DCAC0-000, ENV0-1DCAC0-050,
ENV0-1DCAC0-A00, ENV0-1DCAC0-A50,
ENV0-2DC000-000, ENV0-2DC000-050,
ENV0-2DC000-A00, ENV0-2DC000-A50
Name of Certificate Holder: Enovate Medical, LLC



Name and Address of Factory: Enovate Medical, LLC
1152 Park Avenue, 37129, Murfreesboro, Tennessee,
United States of America

Effective date: 07 June 2018

Consumer and Retail Services, a division of SGS North America Inc.
620 Old Peachtree Road, Ste. 100, Suwanee, GA 30024, USA
t +1 770 570 1800 f +1 770 277 1240 www.sgs.com
Page 2 of 2



This certificate is issued by the company under its General Conditions for Certification Services accessible at www.sgs.com/terms_and_conditions.htm. Attention is drawn to the limitations of liability defined therein and in the Test Report here above mentioned which findings are reflected in this Certificate. Any unauthorized alteration, forgery or falsification of the content or appearance of this document is unlawful and offenders may be prosecuted to the fullest extent of the law.